

Rittal – The System.

Faster – better – everywhere.

► Support section CP 120 Open – CP 6212.150

Date : Feb 4, 2019

ENCLOSURES

POWER DISTRIBUTION

CLIMATE CONTROL

IT INFRASTRUCTURE

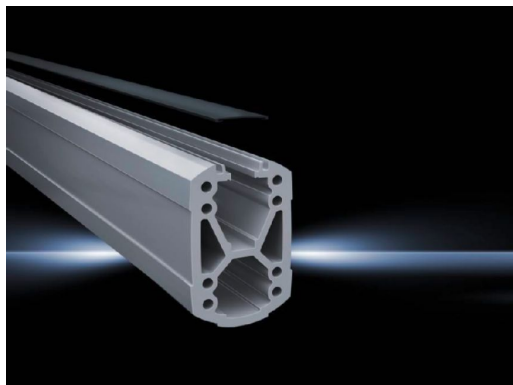
SOFTWARE & SERVICES

FRIEDHELM LOH GROUP



Support section CP 120 Open – CP 6212.150

created: 04.02.2019 build on www.rittal.com/uk-en



Product description

Description:	Attachment to the connection components with 4 self-tapping screws in the screw channel. May be cut to any required length, no thread-tapping required. Open cable duct for easy servicing access and for pre-assembled cables with connectors; lockable via cover section. X-shaped profiling for greater load capacity, large cable routing channels. Upper channel adequate for cables with large connectors (e.g. DVI or VGA) and available/usable throughout the entire system.
Material:	Support section: Extruded aluminium section Cover: Plastic
Colour:	Support section: RAL 7035 Cover: RAL 7024
Supply includes:	Support section Clip-in lid

Product features

Dimensions:	Width: 75 mm Height: 120 mm
Length:	500 mm
Packs of:	1 pc(s).
Weight/pack:	4.6 kg
EAN:	4028177683969
Customs tariff	76042100

number:

ETIM 6.0: EC000882

ETIM 5.0: EC000882

eCl@ss 8.0/8.1: 27400556

eCl@ss 7.0/7.1: 27189261

eCl@ss 6.0/6.1: 27189261

eCl@ss 5.1/5.1.4: 27189248

Product description: CP Support section CP 120, open, L: 500 mm

Approvals

Declarations: Manufacturer's declaration
